

Adjusting screen length limits

We only recommend that experienced AV installers undertake these procedures:

Limits are set by the factory. Adjusting limits is not recommended, as it can cause damage to the screen if done incorrectly.

When adjusting or testing limits, ALWAYS be prepared to stop the screen in case the limits have been set incorrectly by turning the screw in the wrong direction, or by selecting the wrong screw. It is crucial to NEVER allow the screen to go too far up into the case, or to roll down too far, as there is a high risk of damage to the screen.

When adjusting limits, always make **VERY SMALL ADJUSTMENTS**, then **TEST** the new limit.

Before attempting to adjust the screen, first determine which screw adjusts the up limit, and which adjusts down. The order of the screws varies based on the motor used.

To determine which set screw controls the UP limits, and which controls the DOWN, please follow these instructions:

1. Find the limit adjustment screws inside the screen housing. A light may be required to see the set screws.
 - If the housing around the screws is **BLACK**:
 - Start with the adjustment screw that is closest to the back of the case. This screw can be accessed through the slot where the screen drops down. This should be the DOWN limit adjustment, if the housing around the set screws is black.
 - If the housing around the screws is **YELLOW**:
 - Start with the screw that is closest to the front of the case. This screw is accessed by removing the small rubber insert on the bottom side of the case, below the motor. This should be the DOWN limit, if the housing around the set screws is yellow.
2. Drop the screen down using the down button on the remote control, or the manual button, until the set limit is reached. If the screen looks like it is going to hit the ground or another object prior to reaching the factory set limit, you must stop it before it does.
3. Measure the amount of black drop above the screen.
4. Begin adjusting the DOWN limit by turning the DOWN limit screw towards the "-" by 1 to 2 full turns. You may need to shine a light into the case to determine - vs +; It will be marked near the screw with an arrow indicating which direction is - and which is +. Each full turn is about 1" (one inch) of adjustment.
5. Start with 1-2 full turns. Raise the screen up about 6", stop it, and drop it back down. If the amount of black drop has decreased by about 2", you know you have turned the DOWN limit screw.
6. If no change has occurred to the black drop length, roll the screen all the way up and see if the weight bar is now below the case by about 2". If it is, you have adjusted the UP limit screw. Reset the UP limit, and move to the other screw.
7. Continue making SMALL, MINOR adjustments, and test EACH ONE, until the desired limit is reached.

DOWN Limit Adjustment

Turning the DOWN limit screw towards the "-" means less screen down, which reduces the amount of black drop showing.

Turning the DOWN limit screw towards the "+" means more screen down, which increases the amount of black drop showing. **WARNING: THIS CAN CAUSE DAMAGE TO THE SCREEN BY CAUSING THE MATERIAL TO FALL OFF THE ROLL BAR, OR BECOME REVERSE-ROLLED**

UP Limit Adjustment

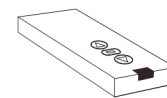
Turning the UP limit screw towards the "-" means less screen up into the case, which causes the material to hang below the case.

Turning the UP limit screw towards the "+" means more screen up into the case, which causes the material to roll further up into the case. **WARNING: THIS CAN CAUSE DAMAGE TO THE SCREEN OR CAUSE THE SCREEN TO BECOME STUCK INSIDE THE CASE**

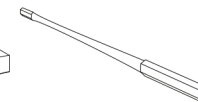
MOUNTING INSTRUCTIONS FOR *Large Studio Motorized* Projection Screen



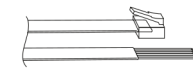
part list



RF remote



∅5 Allen Key

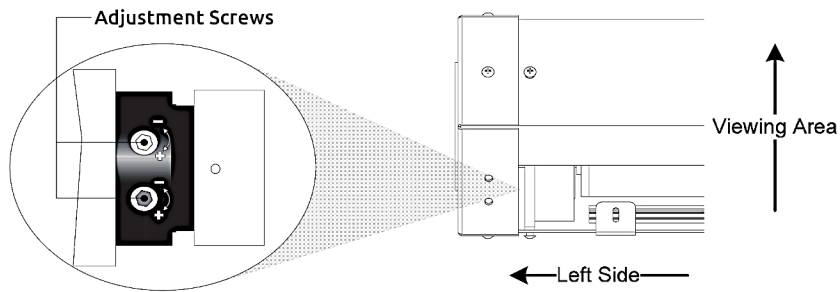


6P6C



Instruction Manual

After installation please store instructions for future reference



IMPORTANT SAFETY INSTRUCTIONS

WARNING: To reduce the risk of fire or electric shock, do not expose to rain or moisture.

1. Read and follow all instructions and warnings in this manual. Keep for future reference.
2. Do not use this apparatus near water.
3. Clean only with a dry cloth.
4. Do not block any ventilation openings. Install according to manufacturer's instructions.
5. Do not install near any heat sources such as radiators, heat registers, stoves, or other apparatus (including amplifiers) that produce heat.
6. Do not override the safety purpose of the polarized or grounding-type plug. A polarized plug has two blades - one wider than the other. A grounding type plug has two blades and a third grounding prong. The wide blade or third prong is provided for your safety. If the provided plug does not fit into your outlet, consult an electrician for replacement of the outlet receptacle.
7. Protect the power cord from being walked on or pinched, particularly at the plug, convenience receptacles, and the point where it exits from the apparatus.
8. Only use attachments / accessories specified by the manufacturer.
9. Unplug this apparatus during lightning storms or when unused for long periods of time.
10. Refer all servicing to qualified service personnel. Servicing is required when the apparatus has been damaged in any way, such as when the power-supply cord or plug is damaged, liquid has been spilled or objects have fallen into the apparatus, the apparatus has been exposed to rain or moisture, does not operate normally, or has been dropped.
11. Do not expose this equipment to dripping or splashing, ensure that no objects filled with liquids, such as vases or drinking vessels, are placed on the equipment.
12. To completely disconnect this equipment from the A/C mains, disconnect the power supply cord plug from the A/C receptacle.
13. To avoid overheating the motor, do not continually raise and lower the screen for over 3 minutes or more than 6 times. If the motor begins to overheat, a thermal cut out will automatically cut power to the motor. The motor will then require a cool-down time of approximately 3 minutes before the screen will work again. This safety feature helps to prevent overheating of the motor.

TROUBLESHOOTING

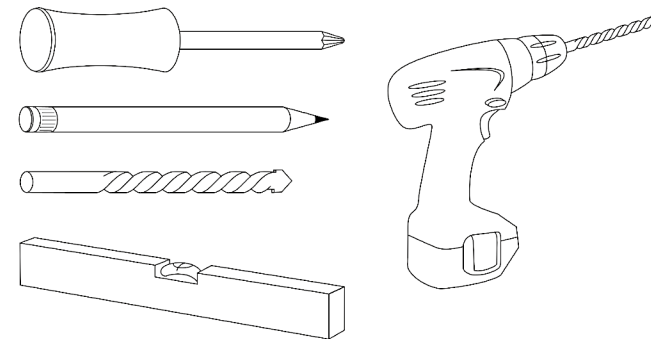
This screen is designed to function for many years. Most problems that occur can be easily resolved. If you have a problem, please try the fixes below. If the problem persists, please contact an authorized dealer for maintenance.

Screen does not react to any control	<ul style="list-style-type: none"> ● Power cable is not correctly connected, or is plugged into an outlet that does not have power. ● Check connections and verify the outlet has power.
Screen goes lower than desired or does not retract far enough	<ul style="list-style-type: none"> ● Adjust the up and down limits as described.
RF control does not work	<ul style="list-style-type: none"> ● Check the batteries in the RF remote you are using. ● Ensure that you are within range of the remote being used. The provided remote will work at a distance of up to 30m in most situations.

Cleaning and Maintenance

1. Do not clean the screen case with water. Use a clean dry cloth to clear dust and dirt regularly.
2. To clean non-coated screen material, use warm soapy water only. Never use chemicals or abrasives, as this will damage the surface of the material, which will impact the viewing quality of your screen. NEVER clean a coated screen with water. Use a clean, dry cloth to remove dust, dirt, or debris. In some cases, a blower can be used to remove dust from large areas of the screen surface.

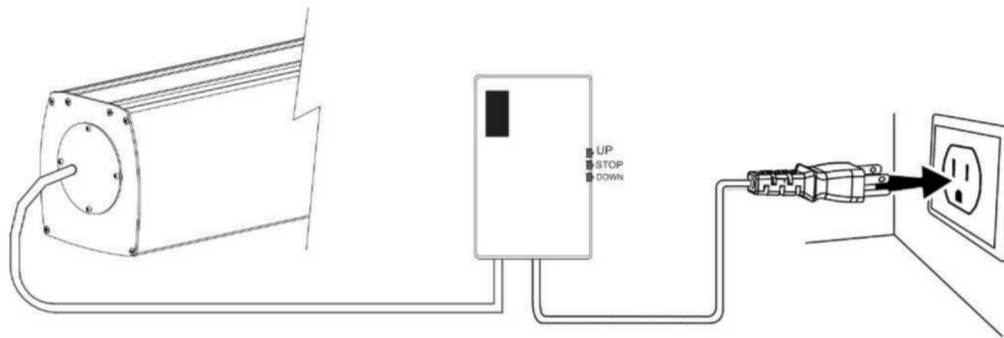
tools required



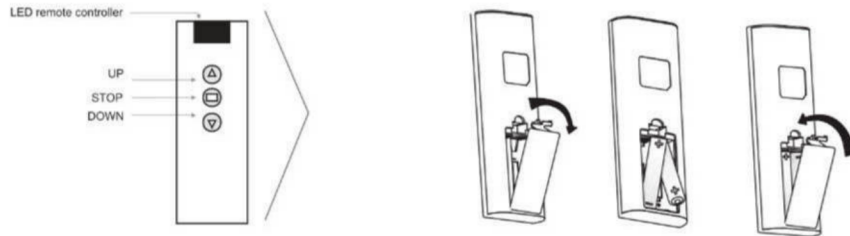
Motorized Screen Power Specifications

Voltage (V)	Frequency (Hz)	Watts (W)	Application
230V/120V/100V	50Hz/60Hz	160W/156W	Applies to 180" and up Motorized Screen

Power connection

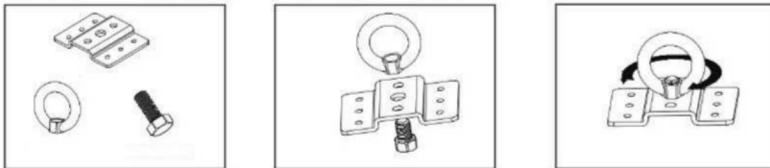


radio frequency control

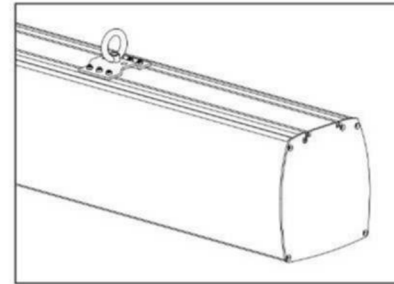
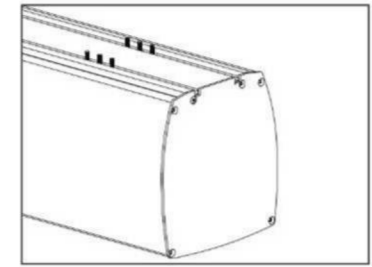
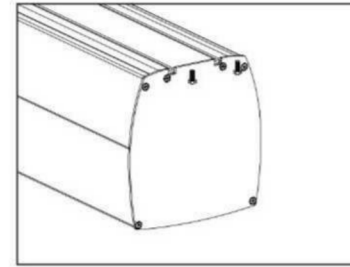


INSTALLATION (aluminum case)

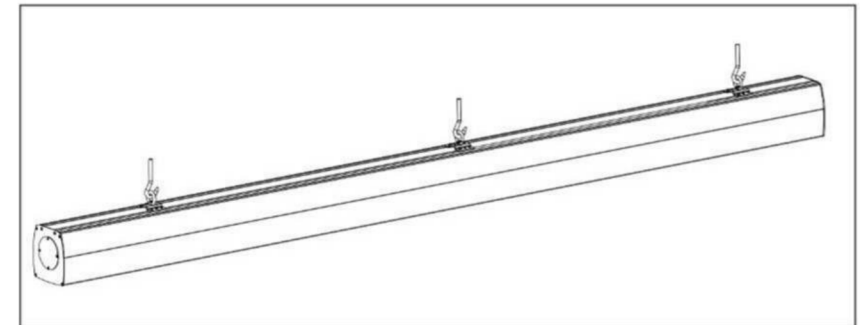
1. Assemble the bracket and the eye nut as below :



2. Slide the M6 screws into two rails on the top of the casing, fix the bracket and eye nut set in the proper position using M6 bolts.



3. Hang the screen onto the lifting points which were pre-installed by customer. Always ensure the screen is secured to a strong surface such as wood, steel, or concrete.



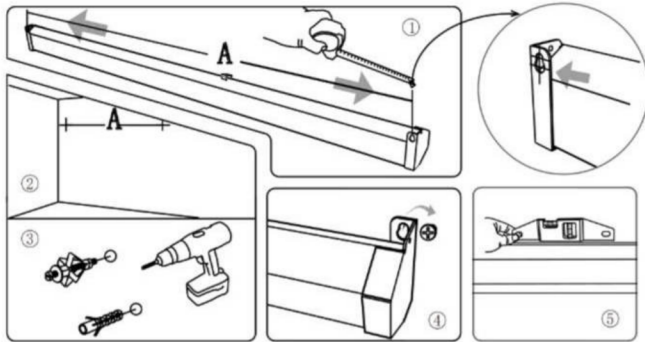
NOTE: Screens may have more anchor points than pictured, depending on size. For safety reasons, a minimum of 3 anchor points must be used for all installations.

INSTALLATION (steel case)

Wall Mount

Using a tape measure, measure the distance between the keyholes on the casing. (Figure 1). According to the measurement, use the drill to drill identical holes of the appropriate size (use a smaller drill bit than the actual screws) on the wall and ensure that it is level (Figure 2 and 3). Screw in the appropriate screws, $\phi 12 \times 80$ plus anchors, leaving enough space at the end to hang the casing (Figure 4). Always ensure the screen is anchored to a sturdy material such as wood, concrete, or steel. To ensure that the screen is level, use a leveler to check (Figure 5).

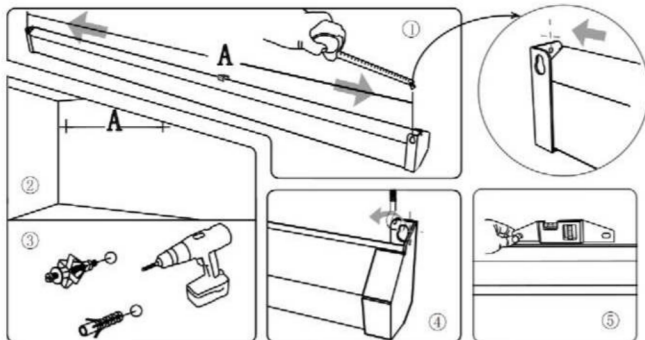
NOTE: Screens may have more anchor points than pictured, depending on size. For safety reasons, a minimum of 3 anchor points must be used for all installations.



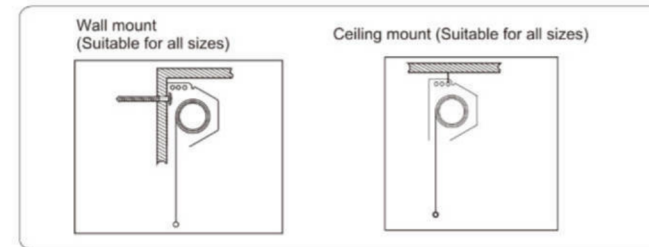
Ceiling Mount

Using a tape measure, measure the distance between the rings for hanging on the casing. (Figure 1). According to the measurement, use the drill to drill identical holes of the appropriate size (use a smaller drill bit than the actual hook screws) on the ceiling and ensure that it is level (Figure 2 and 3). Screw in the hook screws (not provided), and lift the screen into the hook screws to hang (Figure 4). Always ensure the hooks are secured to a sturdy material such as wood, steel, or concrete. To ensure that the screen is level, use a leveler to check (Figure 5).

NOTE: Screens may have more anchor points than pictured, depending on size. For safety reasons, a minimum of 3 anchor points must be used for all installations.



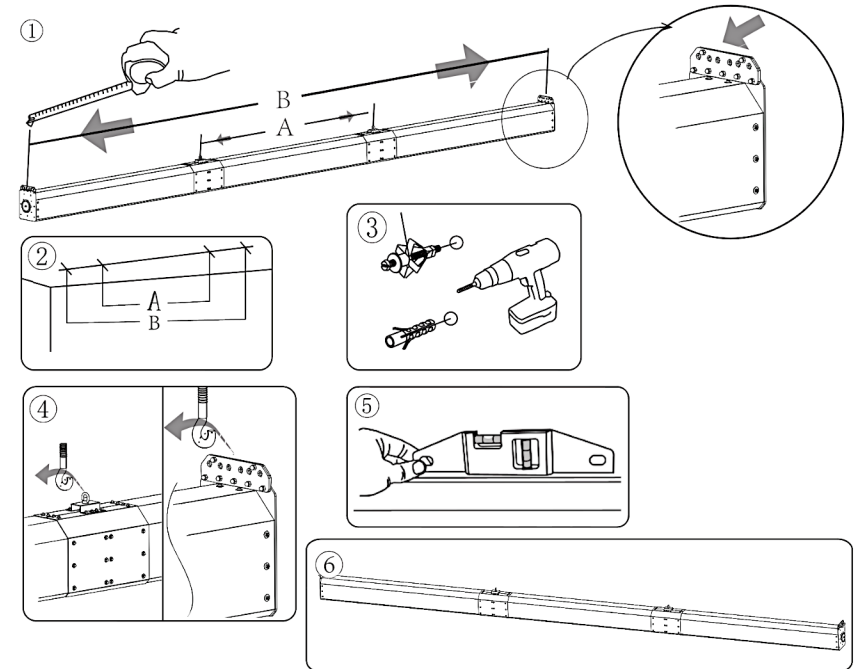
Without mounting bracket installation

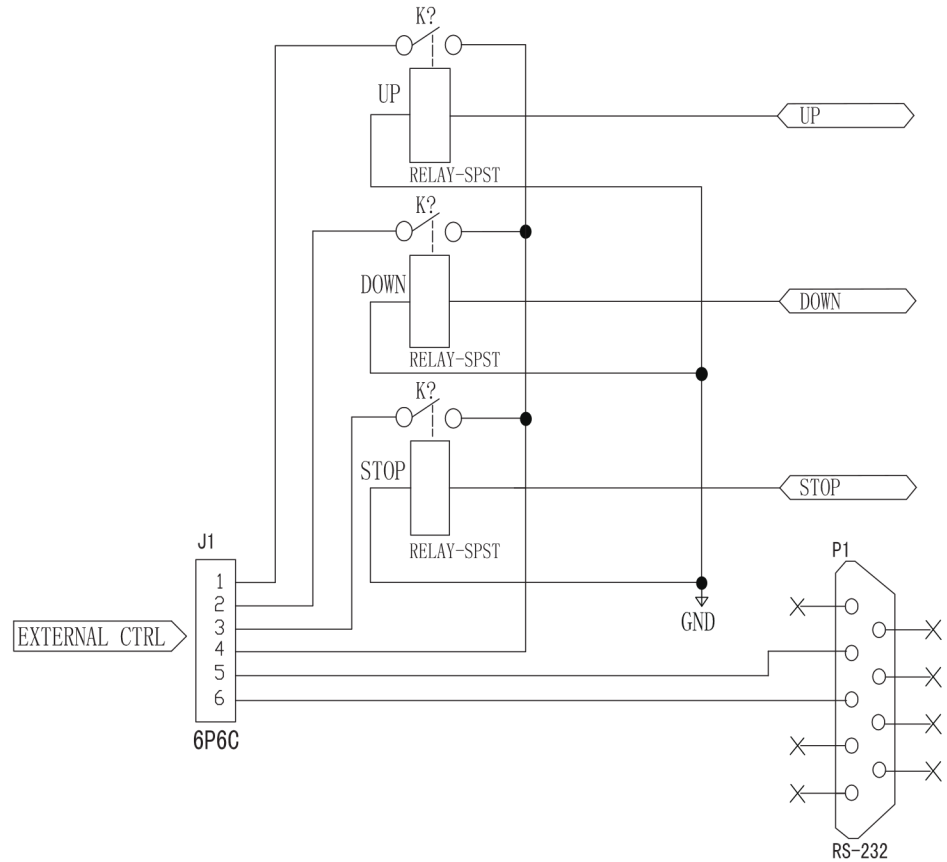
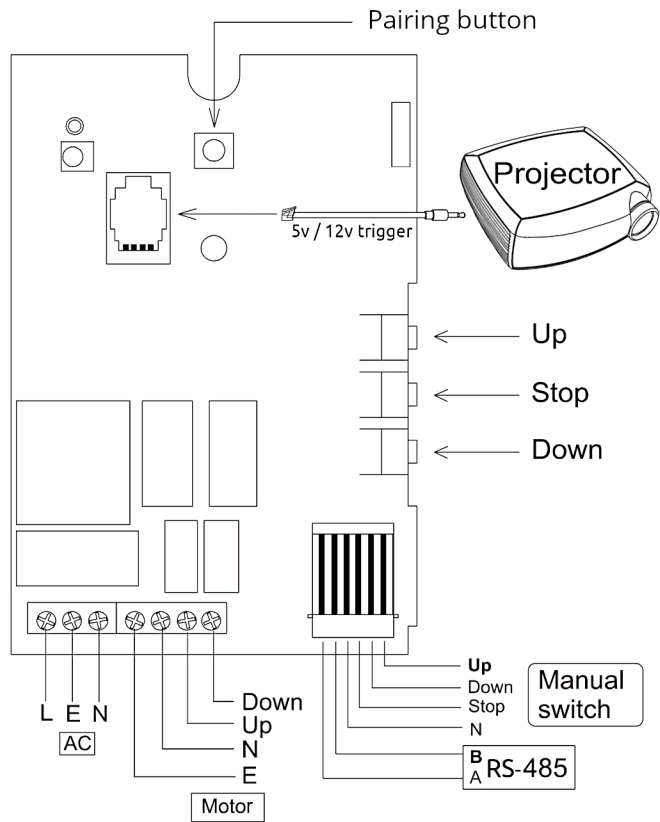


INSTALLATION (Sectioned Case)

Ceiling Mount

Using a tape measure, measure the distance between the two rings for hanging on the casing. (Figure 1). According to the measurement, use the drill to drill identical holes of the appropriate size (use a smaller drill bit than the actual hook screws) on the ceiling and ensure that it is level (Figure 2 and 3). Screw in the hook screws (not provided), and lift the screen into the hook screws to hang (Figure 4). To ensure that the screen is level, use a leveler to check (Figure 5).





RS232 central control:

RS232 setting 1 Baud rate: 2400

2 data: 8 codes

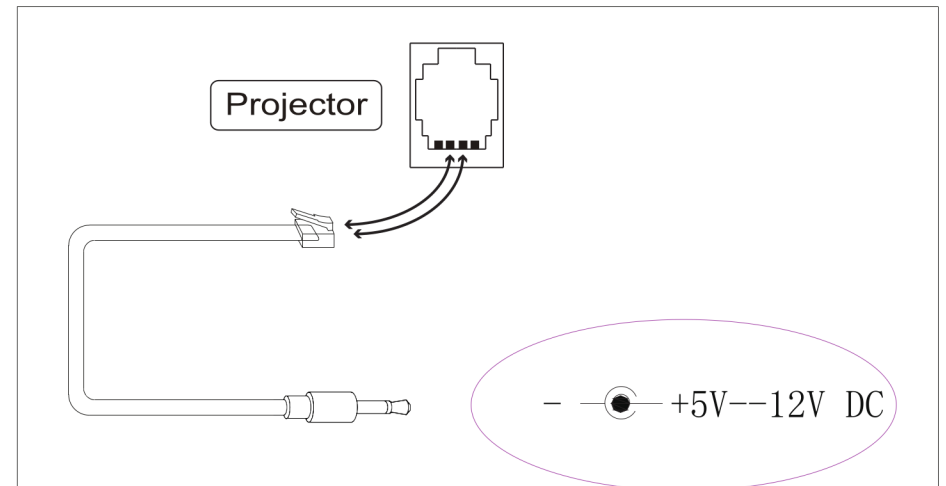
4 start: 1

5 stop: 1

For up: 0xFF,0xEE,0xEE,0xEE,0xDD

For down: 0xFF,0xEE,0xEE,0xEE,0xEE

For stop: 0xFF,0xEE,0xEE,0xEE,0xCC



RF Remote Pairing

Note: The provided RF remote is paired with the screen in the factory. These steps are necessary only if the remote has to be replaced, or when troubleshooting remote control issues.

To pair the RF remote, use the following steps:

1. Remove the screw from the bottom of the control box (near the power cord), open the control box, and locate the remote pairing button.
2. Using the manual buttons, lower the screen 8-10 inches.
3. Press and hold the pairing button for 3 seconds, or until the screen moves up and down once.
4. Within 8 seconds, press and hold the UP button on the RF remote control until the screen moves up and down again.
5. Test the remote to ensure it controls the screen. If it is still not working correctly, repeat steps 2-3 as necessary. Make sure step 3 is completed within 8 seconds of releasing the pairing button.

